



- **Property Features:**
- High Ceilings
- MGP10 Timber Frames & Trusses
- NBN Hub and Solar Hot Water
- Feature Entry Door
- Stone Benches throughout, 40mm to kitchen
- 900mm Westinghouse Appliances
- LED Downlights
- Evaporative Cooling
- Fixed site costs up to P class soil*
- Floor plan customization option*

Jasmine 2259

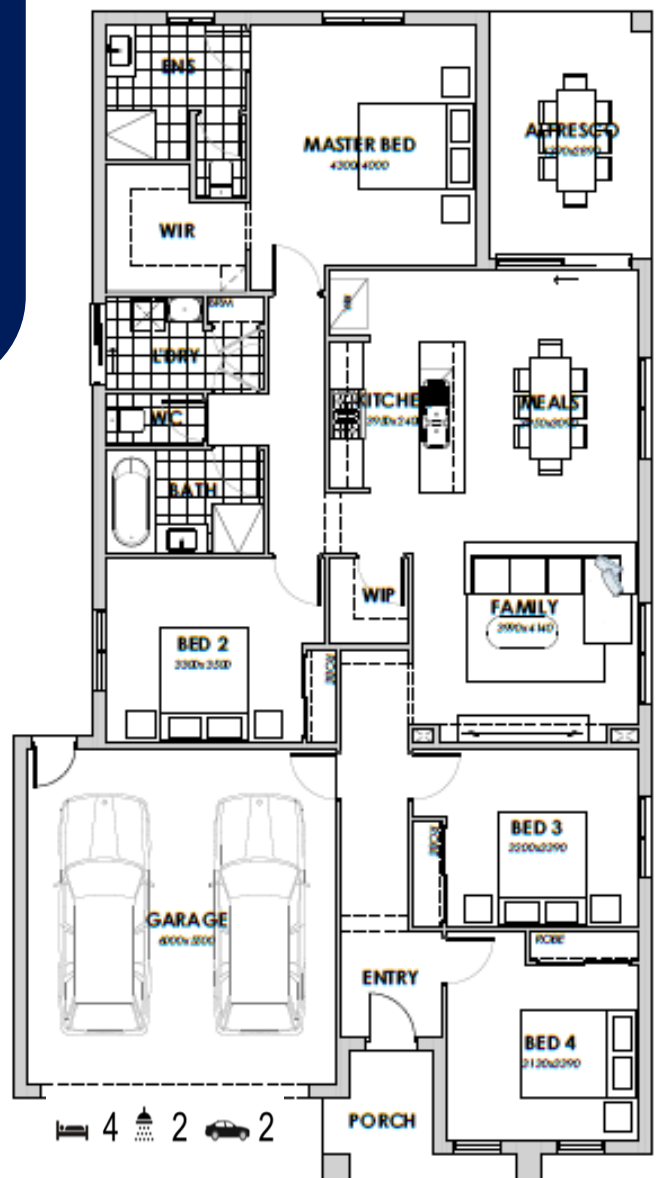
Suited to lot size of 12.5m x 28m

\$630,850

**Lot 161 Sumac Street
Everton estate, Brookfield**

Fixed Price House and Land Package*

The modern design of the Jasmine 2259 provides maximum comfort to the whole family. With 4 generously sized bedrooms, the Jasmine 2259 is sure to suit a large or growing family. The master bedroom to the rear of the home comprises a walk-in robe and ensuite, making it a lovely space to rest and recuperate. The Jasmine 2259 also includes a functional kitchen with a walk-in pantry and open plan meals and living area. The spacious alfresco also provides indoor-outdoor flow for those who love to entertain. The Jasmine 2259 will provide the home feeling that every family desires.



Aarti Puri 0498 989 289 aarti@dulgerhomes.com.au