



KENNEDY 3813

\$986,820

**Lot 3109 Edenderry street
Westbrook, Truganina**

Fixed Price House and Land Package*

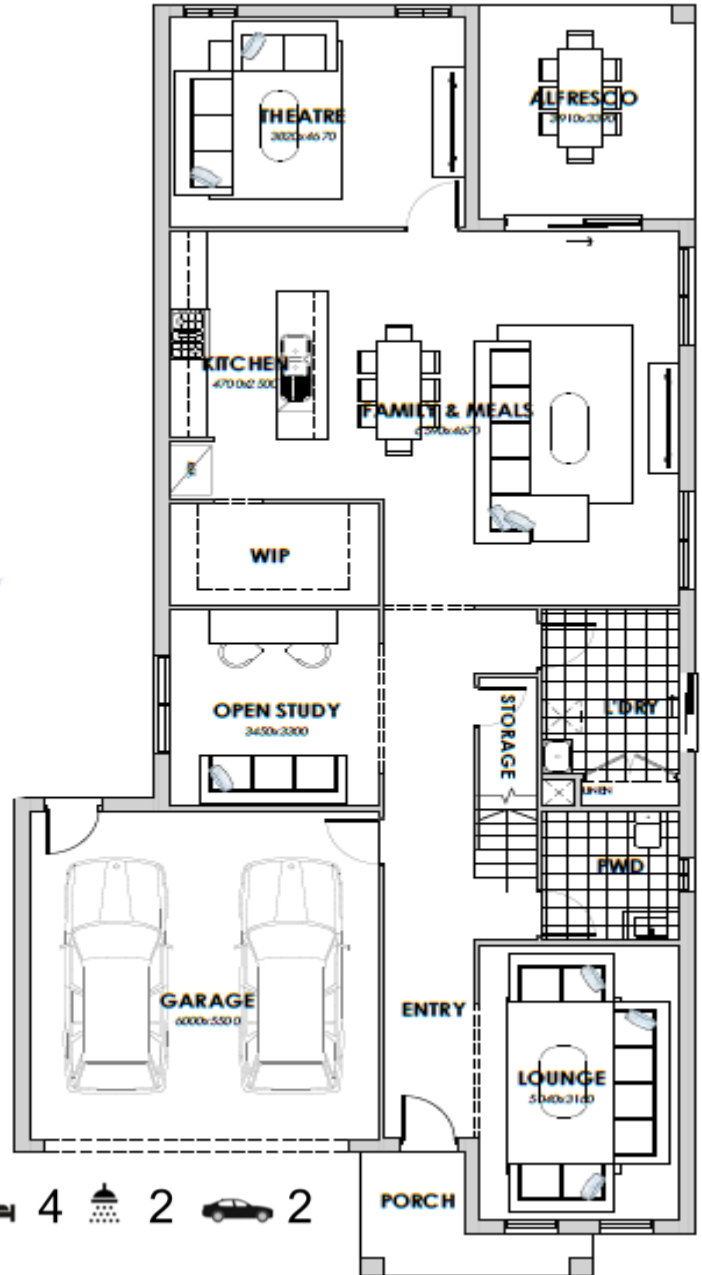
The modern floor plan of the Kennedy 3813 is designed with first home buyers and families in mind. The Kennedy 3813 provides everyone with the solitude and privacy they desire, but also the shared living spaces that make a house a home. With 3 huge minor bedrooms upstairs, and large master retreat with a walk-in robe to envy the Kennedy 3813 is spacious enough for the whole family. The Kennedy 3813 also includes an open plan living, meals and kitchen area adjacent to the alfresco for seamless indoor-outdoor entertaining. This floor plan is the perfect beginning for large or growing families like yours.

Property Features:

- Developer Requirements
- 450mm Eaves to First Floor
- 2740mm Ceiling Height
- NBN hub and Recycled Water connections
- 900mm Westinghouse Appliances
- Floor Covering (Timber Laminate, Carpet, Tiles)
- Tiled shower bases & Heat lamps to bathrooms
- Electronic Garage Door and Remotes
- Feature Entry Door
- Stone Benches throughout
- 40mm stone to kitchen
- LED Downlights
- Refrigerated Heating and Cooling
- Balcony façade included
- Victorian Ash Timber Staircase
- Fixed site costs up to P class soil
- Ground floor guest bedroom option*
- Floor plan full customization option*
- Void Option*

Aarti Puri 0498 989 289 aarti@dulgerhomes.com.au

KENNEDY 3813



4 2 2

\$986,820

Lot 3109 Edenderry street Westbrook, Truganina

Fixed Price House and Land Package*

Aarti Puri 0498 989 289 aarti@dulgerhomes.com.au

All pictures and photos are for illustration purposes only and may not represent the final product. House and land package are based on 300mm fall & H class soil, designs, inclusions, specifications, promotions may be subject to change without notification. Prices are subject to change at the discretion of the builder. Price subject to compactions report and limited cover rocks removals. Prices are inclusive of G.S.T. * Terms and Conditions Apply.